



SAW Components

Data Sheet B1602





SAW Components

B1602

Low-Loss Filter for Digital Television

1090,0 MHz

Data Sheet



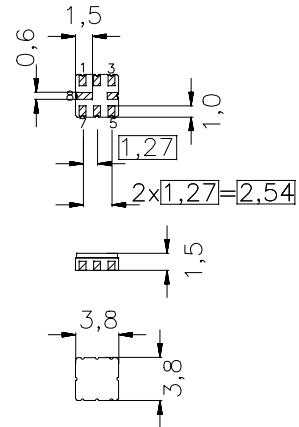
SMD ceramic package QCC8B

Features

- Low loss RF filter for up down conversion
- Usable passband 12 MHz
- Low amplitude ripple
- Balanced to balanced operation
- Package for **Surface Mounted Technology (SMT)**

Terminals

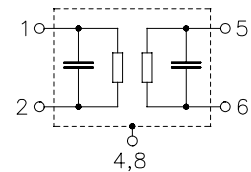
- Ni, gold-plated



Dimensions in mm, approx. weight 0,07 g

Pin configuration

- 1 Input
- 2 Input
- 5 Output
- 6 Output
- 3,7 To be grounded
- 4,8 Case - ground



Type	Ordering code	Marking and package according to	Packing according to
B1602	B39109-B1602-Z810	C61157-A7-A46	F61074-V8167-Z000

Electrostatic Sensitive Device (ESD)

Maximum ratings

Operable temperature range	T	0 /+85	°C	
Storage temperature range	T_{stg}	0 /+85	°C	
DC voltage	V_{DC}	0	V	
Source power	P_S	0	dBm	source impedance 50 Ω



SAW Components

B1602

Low-Loss Filter for Digital Television

1090,0 MHz

Data Sheet



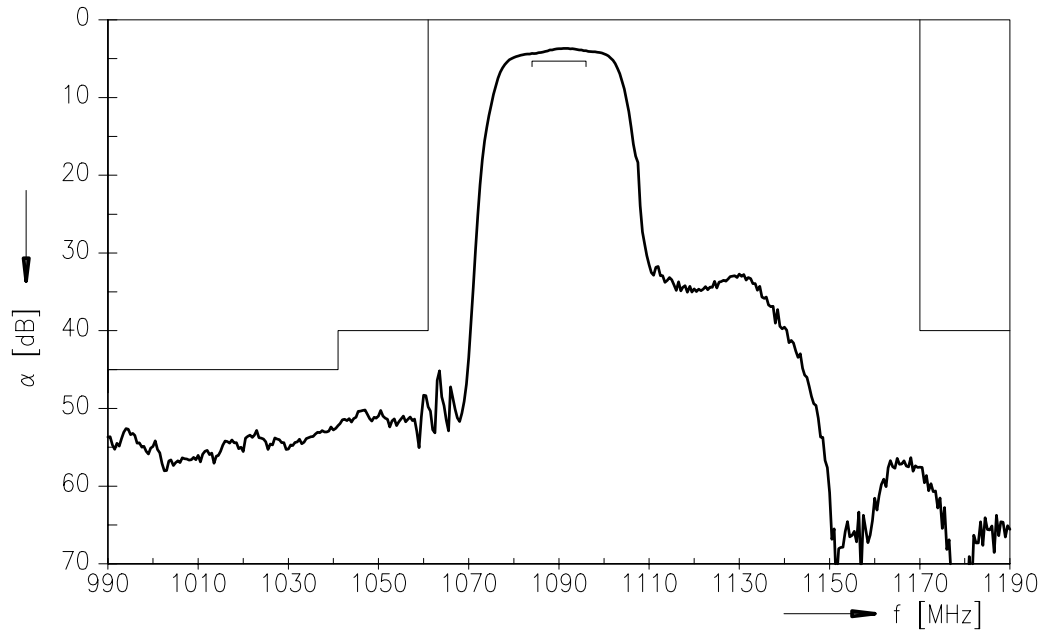
Characteristics

Operating temperature range: $T = 0^{\circ}\text{C}$ to 85°C
 Terminating source impedance: $Z_S = 50\ \Omega$
 Terminating load impedance: $Z_L = 50\ \Omega$

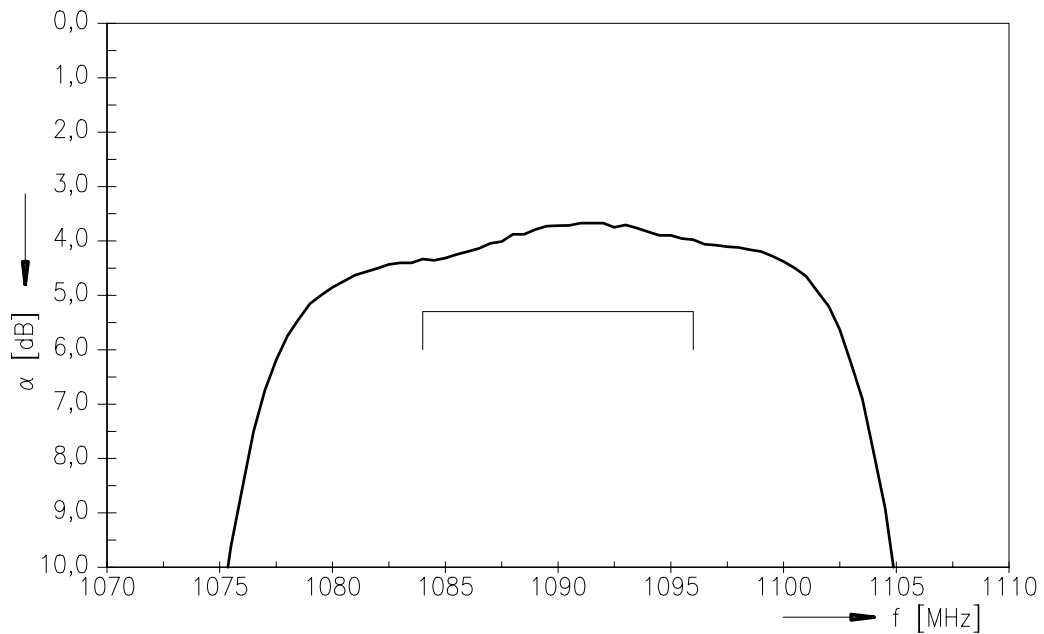
		min.	typ.	max.	
Center frequency	f_c	—	1090,0	—	MHz
Maximum insertion attenuation	α_{\max}				
	1084,00 ... 1096,00 MHz	—	4,3	5,3	dB
Amplitude ripple in passband (p-p)	$\Delta\alpha$				
	1084,00 ... 1096,00 MHz	—	1,1	1,5	dB
Attenuation	α				
	500,00 ... 924,00 MHz	50,0	60,0	—	dB
	924,00 ... 944,00 MHz	50,0	52,0	—	dB
	944,00 ... 1041,00 MHz	45,0	50,0	—	dB
	1041,00 ... 1061,00 MHz	40,0	50,0	—	dB
	1170,00 ... 2000,00 MHz	40,0	47,0	—	dB



Transfer function

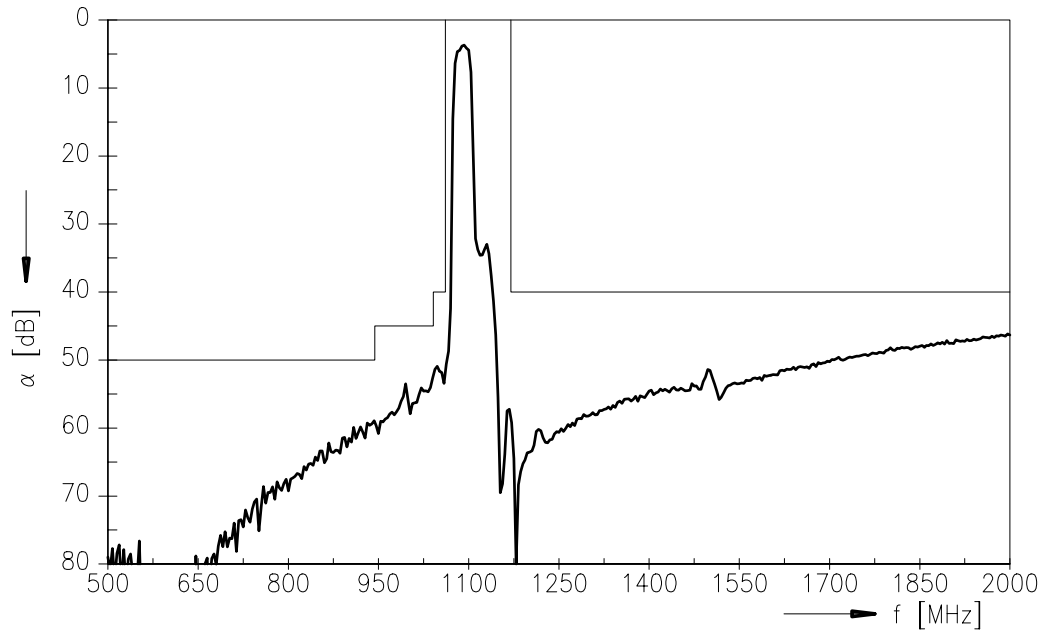


Transfer function (pass band)





Transfer function (wideband)





SAW Components

B1602

Low-Loss Filter for Digital Television

1090,0 MHz

Data Sheet



Published by EPCOS AG

Surface Acoustic Wave Components Division, SAW CE MM PD

P.O. Box 80 17 09, 81617 Munich, GERMANY

© EPCOS AG 2003. Reproduction, publication and dissemination of this data sheet, enclosures hereto and the information contained therein without EPCOS' prior express consent is prohibited.

Purchase orders are subject to the General Conditions for the Supply of Products and Services of the Electrical and Electronics Industry recommended by the ZVEI (German Electrical and Electronic Manufacturers' Association), unless otherwise agreed.

This brochure replaces the previous edition.

For questions on technology, prices and delivery please contact the Sales Offices of EPCOS AG or the international Representatives.

Due to technical requirements components may contain dangerous substances. For information on the type in question please also contact one of our Sales Offices.